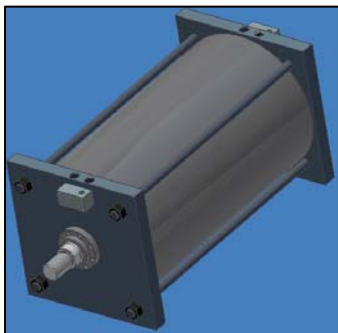


High Flow Cylinder Manifold
MD-2 Series Dual 3-Port, 2-Position
3/8" to 1" Ported



and Dale Industrial introduce the innovative MD-2 Series manifold for cylinder applications requiring rapid cycling. These three way valves can be used individually to control single acting cylinders or in pairs to control double acting cylinders. When high cylinder speeds are required the MD-2 manifold provides high inlet pressures and unobstructed low pressure exhaust. Close coupling of the valve and cylinder will improve cylinder performance and save compressed air by eliminating the need to pressurize pipe runs which do not contribute to the work done by the cylinder.



Competitive Advantage

- Rapid cylinder actuation - Cv range from 3.0 to 12.
- Compact design – Less than one half the size of comparable flow products.
- Robust Construction – Machined from solid aluminum extruded body and top plate.
- Maintenance – The MD series valves can be completely serviced or rebuilt within minutes.

